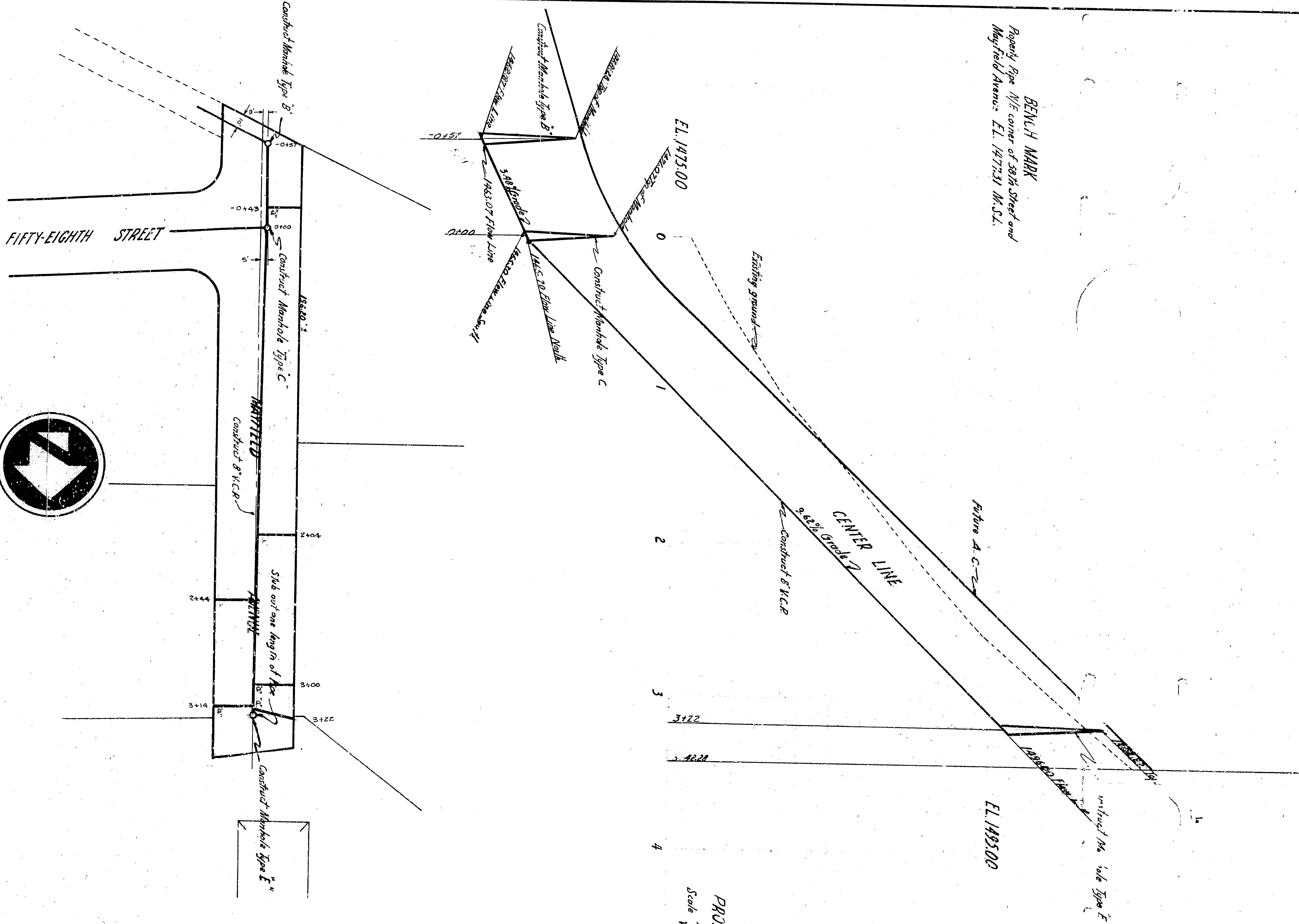


APPROVED: *[Signature]* 1962
 REGISTERED CIVIL ENGINEER NO. 26251
 DRAWING NO. 3111
 CHECKED BY: *[Signature]*
 SHEET 4 OF 4 RECOMMENDED

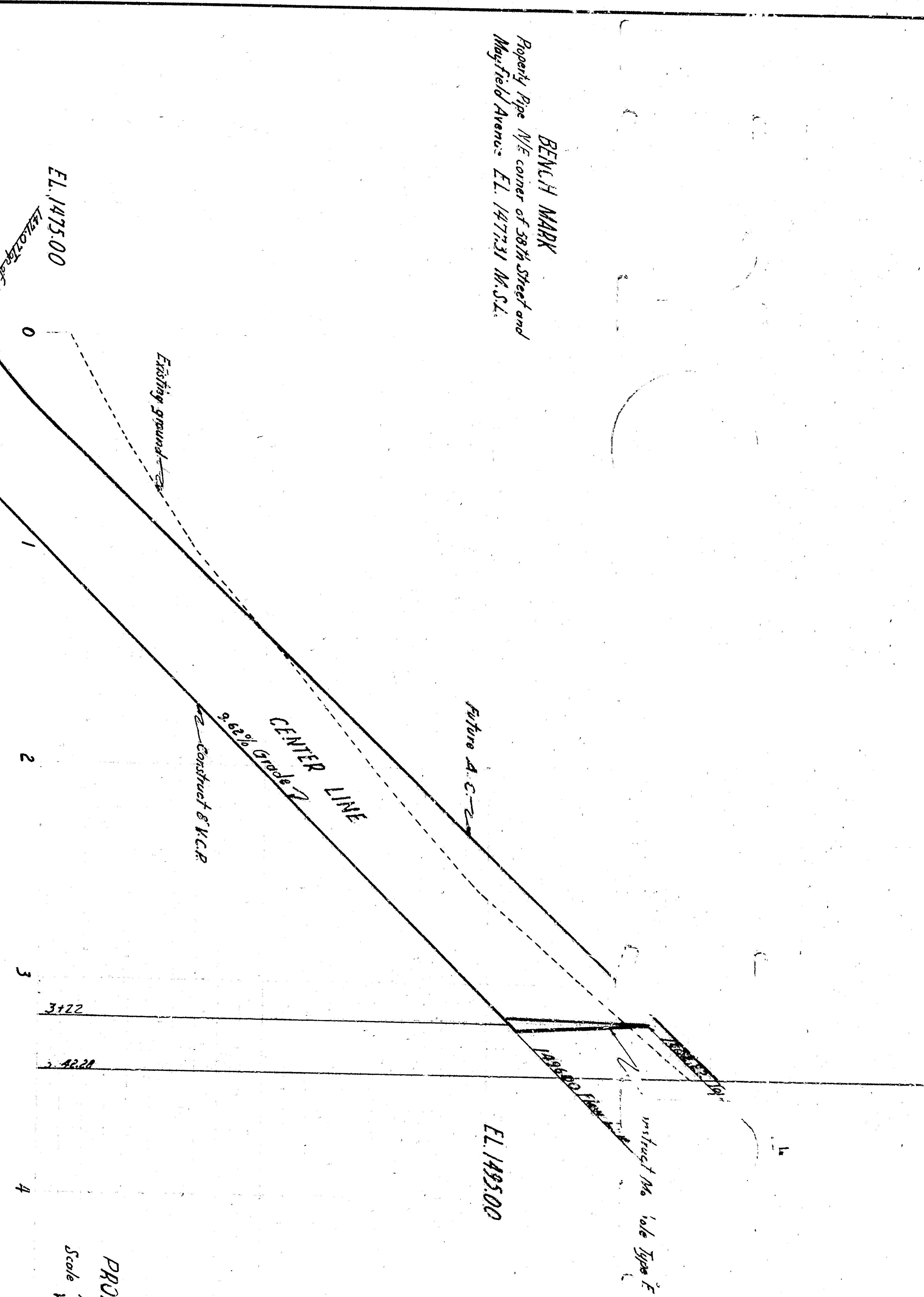
PLAN
 Scale 1" = 40'

Plan revised by Resolution of the Board of Public Works, City of San Bernardino, Change Plan No. 3111, Resolution No. 7778, Approved 9/30/62

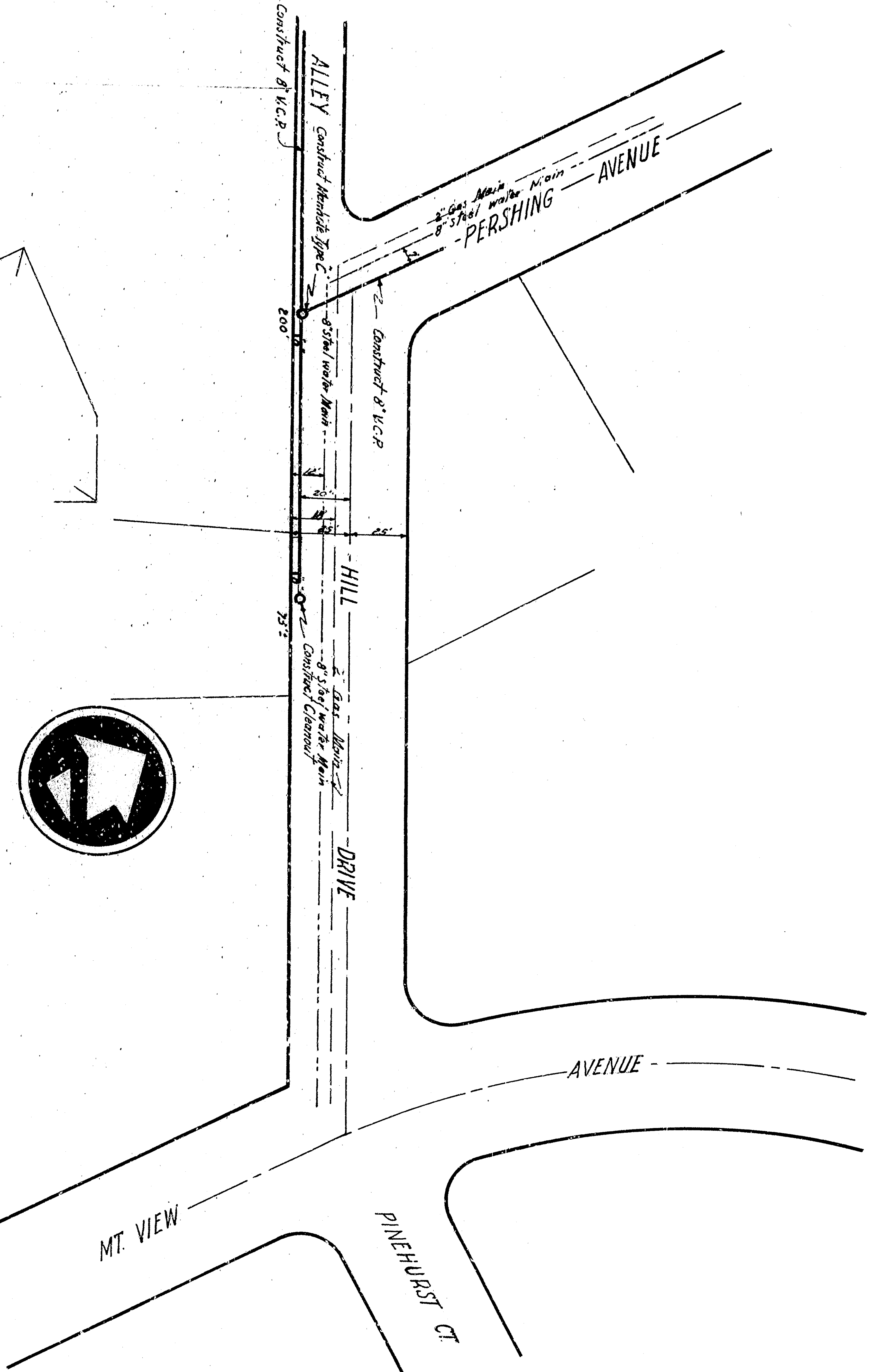
CITY OF SAN BERNARDINO
 DEPARTMENT OF ENGINEERING
 HARRYFIELD MARQUE
 Adviser, Fifty-Eighth Street and a part of Hill Drive, Hill Drive, Pershing Avenue and Mt. View Avenue



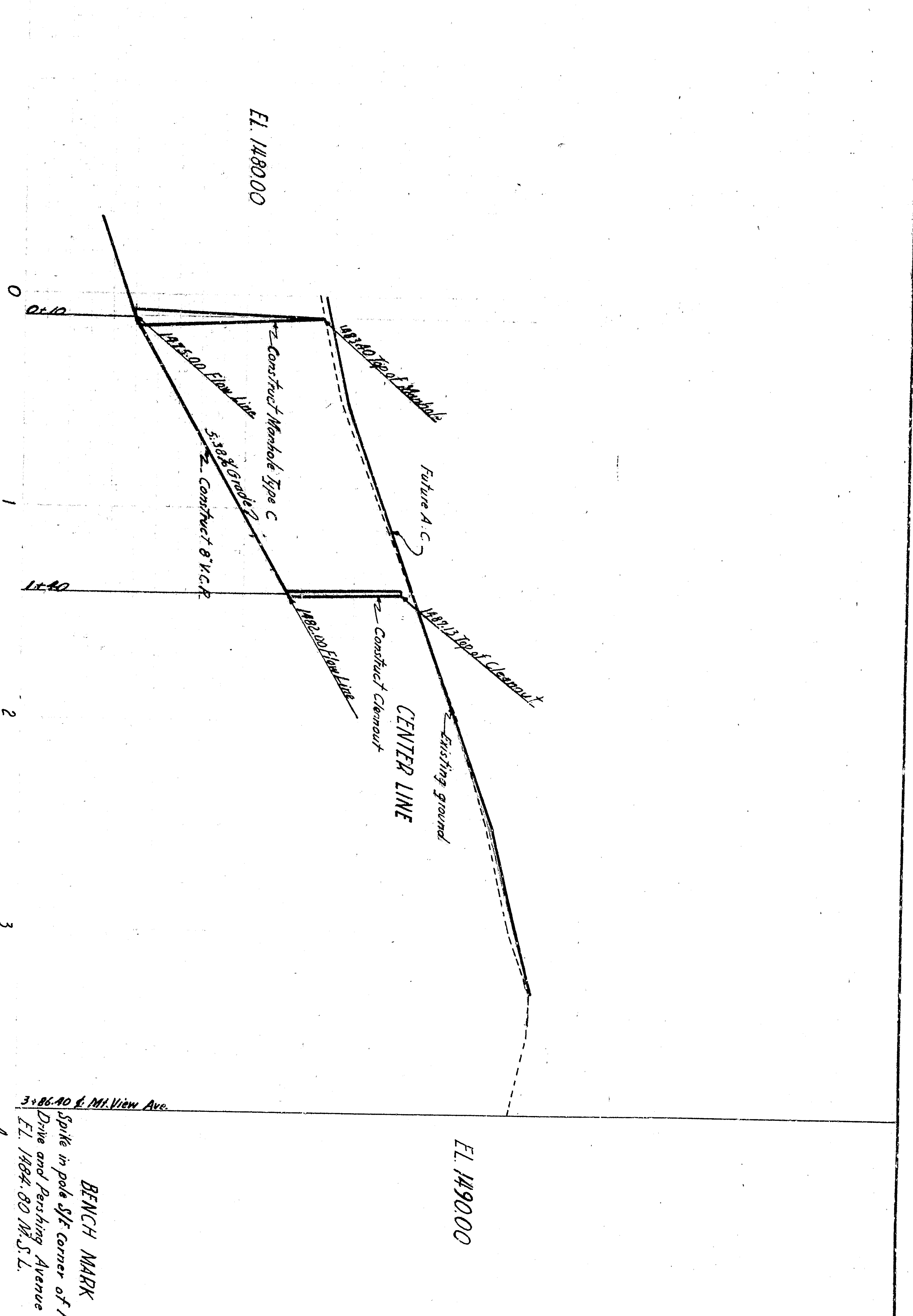
PLAN
Scale 1" = 40'



PROFILE
Scale Vert. 1" = 4'



PLAN
Scale 1" = 40'



PROFILE
Scale Vert. 1" = 4'

APPROVED: *[Signature]* 1962
 REGISTERED CIVIL ENGINEER NO. 26251
 DRAWING NO. 3111
 CHECKED BY: *[Signature]*
 SHEET 4 OF 4
 DEPARTMENT OF ENGINEERING
 CITY OF SAN BERNARDINO
 HANFORD AERODROME
 Access: Fifty-Eighth Street and a point North
 HILL DRIVE
 Between Pershing Avenue and Mt. View Avenue

Plan revised by Resolution of Injunction
 to Change Plan No. 3111 Resolution
 No. 7778
 Approved: *[Signature]* 9/31/62